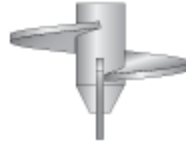




Certified Installers/Exclusive Dealers - CA, NV, AZ

Helical Guy Anchors

ECP Utility is "The Very Best" manufacturer of helical guy anchors for the utility, cell tower and wind turbine industries. ECP produces the highest quality helical guy anchors and accessories to provide support for guyed towers without the need for concrete. ECP Utility offers both Power Installed Torque Anchors (round rod anchors) and square shaft helical anchors (RCSB). Earth Contact Products provide anchors that are Designed and Engineered to Perform.



With load requirements and soil information our Engineering Department and trained support staff is available to help with your project from conception to completion. Civil and Structural Engineers along with project management staffers are welcome to take advantage of our preliminary design and support that provide analysis and calculations to support our helical anchor recommendations.

With more than a 40 year track record, helical ground anchors have revolutionized the utility transmission and distribution industry by providing a quick, cost competitive and verifiable solution to utility professionals throughout the world. ECP Utility helical anchors provide a verifiable foundation element for tension

and compressive applications for telecom towers, utility poles, transmission and distribution lines, solar panel and wind tower foundations. Don't wait, call the steel utility foundation experts today.

Whether you need ground anchors for new tower applications or repairing existing lines and support structures, your solution is just a phone call away. From across the country, engineers and utility contractors rely on ECP Utility helical foundation products to solve their foundation stabilization needs.

Utility Products are Engineered for:

- Guy Wires
- Platform Supports
- Transmission Towers
- Parking / Street Lighting
- Pipelines
- Wind Turbines
- Monopoles
- Foundation Support
- Solar Panels
- Telecom Towers



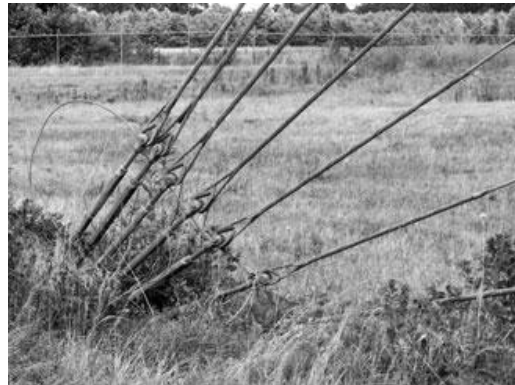
Certified Installers/Exclusive Dealers - CA, NV, AZ



Certified Installers/Exclusive Dealers - CA, NV, AZ

Benefits of Utility Ground Anchors:

- Speed of Installation
- Economically Competitive
- All Weather Installation
- Easy to Install in Limited Access Areas
- Loads Can be Applied Immediately
- No Concrete Issues



Helical Ground Anchors are designed and sized to match load requirements, soil conditions and available site access. Multiple sizes and capacities allow precise designs for the utility industry. There may be one or multiple guywires that can be resisted by one or multiple ECP utility guy wire anchors, dictated by design and load requirements. Helical ground anchors can be used to resist mast and tower loads which consist of lateral and compressive loads focused at the base of the structure. Whether a self supporting tower, a guyed tower or pole helical ground anchors provide a cost effective solution. No matter the application ECP Helical Guy Anchors are the Designed and Engineered to Perform product of choice for the utility industry.

Shaft Size	Installation Torque Factor (k)	Axial Compression Load Limit	Ultimate-Limit Tension Strength	Useable Torsional Strength	Practical Load Limit Based Torsional Strength
1-1/2" Square Bar	9 - 11	70,000 lb.	70,000 lb.	7,500 ft-lb	Load limited to the rated capacity of the attachments and the lateral soil strength against the shaft
1-3/4" Square Bar	9 - 11	100,000 lb.	100,000 lb.	10,000 ft-lb	
2-1/4" Square Bar	10 - 12	200,000 lb.	200,000 lb.	23,000 ft-lb	
2-7/8" Tubular – 0.262" Wall	8 - 9	100,000 lb.	100,000 lb.	9,500 ft-lb	80,000 lb
3-1/2" Tubular – 0.300" Wall	7 - 8	115,000 lb.	120,000 lb.	13,000 ft-lb	97,000 lb
4-1/2" Tubular – 0.337" Wall	6 - 7	160,000 lb.	160,000 lb.	22,000 ft-lb	143,000 lb



Certified Installers/Exclusive Dealers - CA, NV, AZ



Certified Installers/Exclusive Dealers - CA, NV, AZ

Multiple sizes and capacities allow precise design and load match for all applications. The table above displays a complete selection of Helical Anchors available for the utility industry. Helical ground anchor leads are available in lengths from 3' (1M) to 10' (3M). Helix flight diameters range for 6" (150mm) to 14" (355mm) in both 3/8" and 1/2" thickness. Multiple helix combinations, situated on the same shaft, allows designer to target ideal load bearing soils and formations. Helical ground anchor extensions are also available in 3' (1M) to 10' (3M) lengths with a forged coupling for quick precise connection. Various termination connectors are available to secure the guywire to the ground anchor from threaded thimble eyes to clevis applications.

Corrosion protection is provided in the form of hot dipped galvanization (per ASTM A123). Hot dipped galvanization is a great choice for protection from the elements giving design professionals the assurance of long term performance. This added protection allows for installation in aggressive soils and wet areas alike; see our Design and Technical Service Manual for full corrosion information.

Guy Wire Nuts			
Part #	Size	Eye	Weight
For 5/8" Anchor Rods			
TAN-625-001	5/8"	Single Eye	1
TAN-625-002	5/8"	Double Eye	1.8
TAN-625-003	5/8"	Triple Eye	2.2



Guy Wire Nuts			
Part #	Size	Eye	Weight
For 3/4" & 1" Anchor Rods			
TAN-100-001	3/4"-1"	Single Eye	1.9
TAN-100-002	3/4"-1"	Double Eye	1.8
TAN-100-003	3/4"-1"	Triple Eye	2.2



Guy Wire Adapters			
Part #	Size	Eye	Weight
TAA-150-002	1-1/2"	Double Eye	9.5
TAA-150-003	1-1/2"	Triple Eye	9.5
TAA-175-003	1-3/4"	Triple Eye	9.5



Certified Installers/Exclusive Dealers - CA, NV, AZ