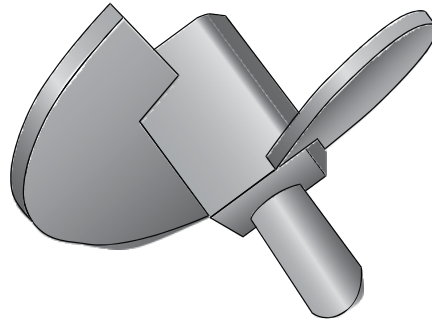


TAX-225-625 (12) - Torque Anchor Extreme Helix



Product Specifications

Anchor Style	Power Installed Torque Anchor
Number of Helices	1
Single Helix	
Rod Diameter	12" (305 mm) x 3/8" (9.52mm)
Torque Rating	5/8" (15.9 mm)
Square Hub	10,000 ft lbs (13,558 N-M)
Coating	2.25" (57.2 mm)
Standard Package	Painted (optional Hot-Dip Galvanized)
Standard Package Unit	2 per Box 48 per PLT Each
Min Order Qty	1
Weight/Ea	16 lbs

Notes: Torque Anchor Extreme Helix; 10,000 ft lbs (13,558 N-M), 12" (305 mm) x 3/8" (9.52mm) Helix for use with 5/8" (15.9 mm) rod



Certified Installers/Exclusive Dealers - CA, NV, AZ