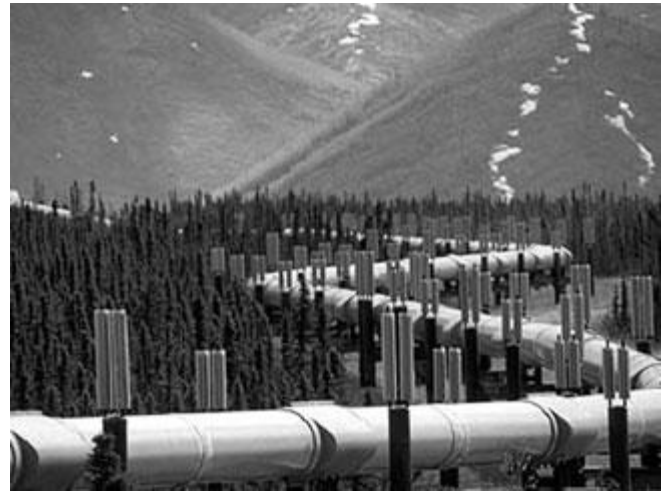
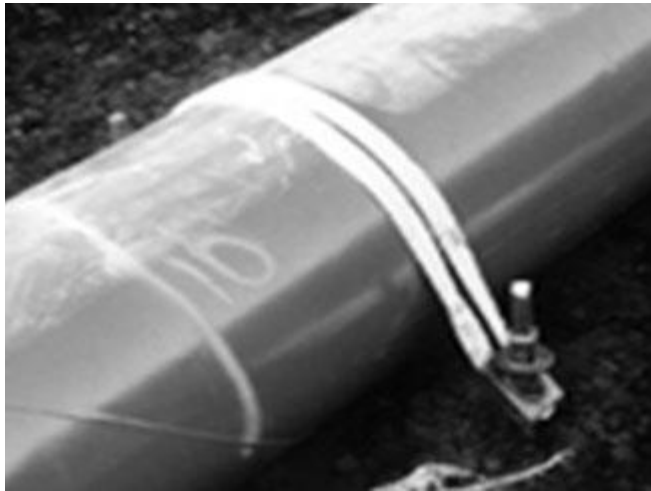




Certified Installers/Exclusive Dealers - CA, NV, AZ

Utility Pipeline

ECP's complete line of pipeline supports and anchors are available for utility contractors that require a fast and cost effective ground anchor. Whether for the gas or petroleum pipelines, support or tie down applications, ECP's Utility Ground Anchors keep the job on schedule and on budget. Our engineering department is standing by to help from conception to completion for civil and structural engineers as well as project management personnel. Call today to speak with our trained staff.



Helical Ground Anchors are designed and sized to match load requirements, soil conditions and available site access. Multiple sizes and capacities allow precise designs for the pipeline industry. To control buoyancy of large diameter pipelines that cross wet areas helical ground anchors are a great alternative to concrete weights. Helical Ground Anchors offer cost effective buoyancy control for large diameter gas pipelines. Helical Ground Anchors also provide a great alternative for supporting petroleum and gas pipelines in sensitive soil applications in a cost effective manner. No matter the application Helical Ground Anchors are the Designed and Engineered to Perform product of choice for the pipeline industry.



Certified Installers/Exclusive Dealers - CA, NV, AZ



Certified Installers/Exclusive Dealers - CA, NV, AZ

Table 2. Capacities of Helical Torque Anchors™					
Shaft Size	Installation Torque Factor (k)	Axial Compression Load Limit	Ultimate-Limit Tension Strength	Useable Torsional Strength	Practical Load Limit Based Torsional Strength
1-1/2" Square Bar	9 - 11	70,000 lb.	70,000 lb.	7,500 ft-lb	Load limited to the rated capacity of the attachments and the lateral soil strength against the shaft
1-3/4" Square Bar	9 - 11	100,000 lb.	100,000 lb.	10,000 ft-lb	
2-1/4" Square Bar	10 - 12	200,000 lb.	200,000 lb.	23,000 ft-lb	
2-7/8" Tubular – 0.262" Wall	8 - 9	100,000 lb.	100,000 lb.	9,500 ft-lb	80,000 lb
3-1/2" Tubular – 0.300" Wall	7 - 8	115,000 lb.	120,000 lb.	13,000 ft-lb	97,000 lb
4-1/2" Tubular – 0.337" Wall	6 - 7	160,000 lb.	160,000 lb.	22,000 ft-lb	143,000 lb

Multiple sizes and capacities allow precise design and load match for all applications. The table above displays a complete selection of Helical Anchors available for the pipeline industry. Helical ground anchor leads are available in lengths from 3' (1M) to 10' (3M). Helix flight diameters range for 6" (150mm) to 14" (355mm) in both 3/8" and 1/2" thickness. Multiple helix combinations, situated on the same shaft, allows designer to target ideal load bearing soils and formations. Helical ground anchor extensions are also available in 3' (1M) to 10' (3M) lengths with a forged coupling for quick precise connection.

Corrosion protection is provided in the form of hot dipped galvanization (per ASTM A123). This added protection allows for installation in aggressive soils and wet areas alike, see our Design and Technical Service Manual for full corrosion information.



Certified Installers/Exclusive Dealers - CA, NV, AZ