



Certified Installers/Exclusive Dealers - CA, NV, AZ

## Power Installed Anchors

We offer a complete line of power installed guy anchors for distribution guy applications. With various rod and flight size combinations we can adapt our anchors for various loads and soil conditions. Our Distribution Series of Power Installed Anchors can help install anchors in all types of soil conditions including soft soils stiff soils that will stop most anchor installations. Single, double and triple guy anchor nuts are available for each power installed rod size along with guy anchor adapters for square bar helicals. The ECP power installed torque anchors are a part of the complete product line of helical anchors, piles and steel foundation products manufactured by Earth Contact Products, LLC, based in Olathe, Kansas. ECP Utility manufacturers made in the USA helical guy anchors in various capacities and configurations for all aspects of the utility industry. From RUS approved square bar transmission anchors and round shaft tower and substation anchors to our RUS approved Power Installed Anchors and No-Wrench anchors for distribution guy anchoring, ECP has the helical anchor and accessories it fit the needs of the electric distribution power industry.

For years the electric distribution industry has relied on ECP helical anchors for tower and pole foundations as well as guy anchors. Being the largest consumer of helical anchors the electric power industry has embraced helical anchors for their many benefits and reliable performance.

| Power Installed Nuts |            |         |
|----------------------|------------|---------|
| Part #               | Rod        | Eye     |
| TAN-625-001          | 5/8"       | Thimble |
| TAN-100-001          | 3/4" or 1" | Thimble |
| TAN-625-002*         | 5/8"       | Twin    |
| TAN-625-100          | 3/4" or 1" | Twin    |
| TAN-625-003          | 5/8"       | Triple  |
| TAN-100-003*         | 3/4" or 1" | Triple  |

\* RUS Accepted



| 1-3/8" Shaft 6000# Single Helix |            |       |
|---------------------------------|------------|-------|
| Part #                          | Rod        | Helix |
| TAPL-625-10 (8)                 | 5/8"       | 8"    |
| TAPL-100-10 (8)                 | 3/4" or 1" | 8"    |
| TAPL-625-10 (10)                | 5/8"       | 10"   |
| TAPL-100-10 (10)                | 3/4" or 1" | 10"   |
| TAPL-625-10 (12)*               | 5/8"       | 12"   |
| TAPL-100-10 (12)                | 3/4" or 1" | 12"   |
| TAPL-100-10 (14)*               | 3/4" or 1" | 14"   |

\* RUS Accepted



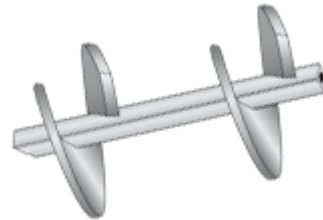
Certified Installers/Exclusive Dealers - CA, NV, AZ



Certified Installers/Exclusive Dealers - CA, NV, AZ

| <b>1-1/2" Shaft 7000# Single Helix</b> |            |       |
|--|------------|-------|
| Part #                                 | Rod        | Helix |
| TAP-625-10 (8)                         | 5/8"       | 8"    |
| TAP-100-10 (8)                         | 3/4" or 1" | 8"    |
| TAP-625-10 (10)                        | 5/8"       | 10"   |
| TAP-100-10 (10)                        | 3/4" or 1" | 10"   |
| TAP-625-10 (12)                        | 5/8"       | 12"   |
| TAP-100-10 (12)                        | 3/4" or 1" | 12"   |
| TAP-100-10 (14)                        | 3/4" or 1" | 14"   |

| <b>1-3/8" Shaft 6000# Double Helix</b> |     |         |
|--|-----|---------|
| Part #                                 | Rod | Helix   |
| TAPL-100-26 (4,4)                      | 1"  | 4" ,4"  |
| TAPL-100-26 (8,8)                      | 1"  | 8" ,8"  |
| TAPL-100-36 (10,10)                    | 1"  | 10" 10" |



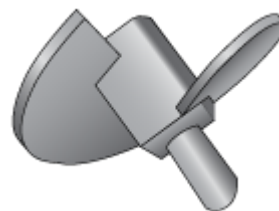
| <b>1-1/2" Shaft 7000# Double Helix</b> |     |         |
|--|-----|---------|
| Part #                                 | Rod | Helix   |
| TAP-100-26 (4,4)                       | 1"  | 4" ,4"  |
| TAP-100-26 (8,8)                       | 1"  | 8" ,8"  |
| TAP-100-36 (10,10)                     | 1"  | 10" 10" |

| <b>Power Installed Anchor Rods</b> |      |        |                  |
|------------------------------------|------|--------|------------------|
| Part #                             | Size | Length | Tensile Strength |
| TAR-625-42                         | 5/8" | 42"    | 16,000#          |
| TAR-750-42                         | 3/4" | 42"    | 23,000#          |
| TAR-100-42                         | 1"   | 42"    | 36,000#          |
| TAR-625-84*                        | 5/8" | 84"    | 16,000#          |
| TAR-750-84*                        | 3/4" | 84"    | 23,000#          |
| TAR-100-84                         | 1"   | 84"    | 36,000#          |



\* RUS Accepted

| <b>2-1/4" Hub 8,000#</b> |            |        |
|--------------------------|------------|--------|
| Part #                   | Rod        | Flight |
| TAX-225-625 (8)          | 5/8"       | 8"     |
| TAX-225-100 (8)          | 3/4" or 1" | 8"     |
| TAX-225-625 (10)         | 5/8"       | 10"    |
| TAX-225-100 (10)         | 3/4" or 1" | 10"    |
| TAX-225-625 (12)         | 5/8"       | 12"    |
| TAX-225-100 (12)         | 3/4" or 1" | 12"    |



Certified Installers/Exclusive Dealers - CA, NV, AZ



Certified Installers/Exclusive Dealers - CA, NV, AZ

|                  |            |     |
|------------------|------------|-----|
| TAX-225-100 (14) | 3/4" or 1" | 14" |
|------------------|------------|-----|

| <b>2-1/4" Hub 10,000#</b> |            |        |
|---------------------------|------------|--------|
| Part #                    | Rod        | Flight |
| HTAX-225-100 (8)          | 3/4" or 1" | 8"     |
| HTAX-225-100 (10)         | 3/4" or 1" | 10"    |
| HTAX-225-100 (12)         | 3/4" or 1" | 12"    |
| HTAX-225-100 (14)         | 3/4" or 1" | 14"    |

| <b>2-1/2" Hub 10,000#</b> |            |        |
|---------------------------|------------|--------|
| Part #                    | Rod        | Flight |
| TAX-250-625 (8)           | 5/8"       | 8"     |
| TAX-250-100 (8)           | 3/4" or 1" | 8"     |
| TAX-250-625 (10)          | 5/8"       | 10"    |
| TAX-250-100 (10)          | 3/4" or 1" | 10"    |
| TAX-250-625 (12)          | 5/8"       | 12"    |
| TAX-250-100 (12)          | 3/4" or 1" | 12"    |
| TAX-250-100 (14)          | 3/4" or 1" | 14"    |

| <b>2-1/4" Hub 10,000#</b> |            |        |
|---------------------------|------------|--------|
| Part #                    | Rod        | Flight |
| HTAX-250-100 (8)          | 3/4" or 1" | 8"     |
| HTAX-250-100 (10)         | 3/4" or 1" | 10"    |
| HTAX-250-100 (12)         | 3/4" or 1" | 12"    |
| HTAX250-100 (14)          | 3/4" or 1" | 14"    |

| <b>Rod Couplers</b> |         |         |        |
|---------------------|---------|---------|--------|
| Part #              | Size    | Desc.   | Weight |
| TAC-625             | 5/8"    | Coupler | 0.5    |
| TAC-100             | 3/4"-1" | Coupler | 0.5    |



Certified Installers/Exclusive Dealers - CA, NV, AZ